



—

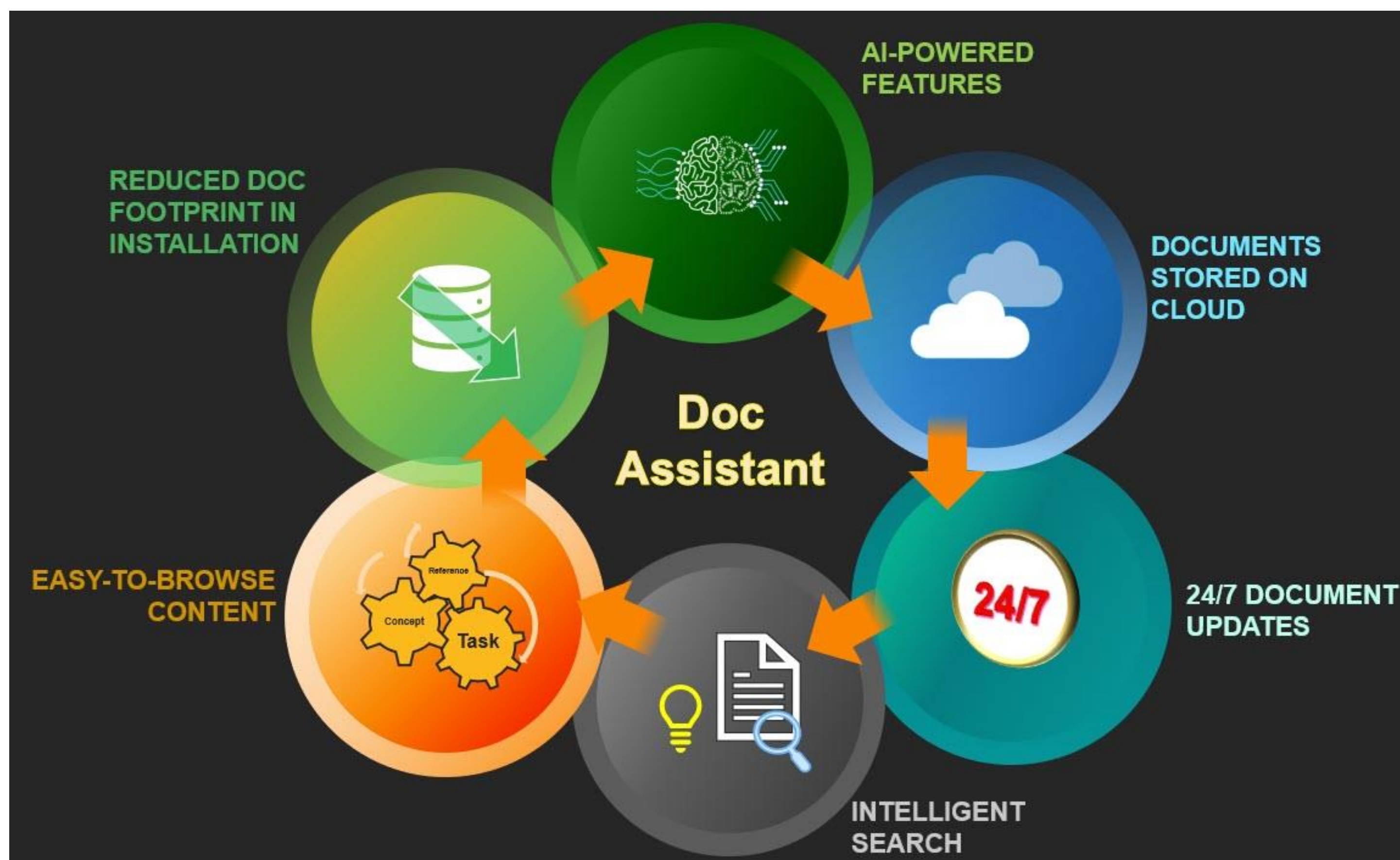
Doc Assistant

Cadence Cloud-based Smart Online Help Viewer

Doc Assistant

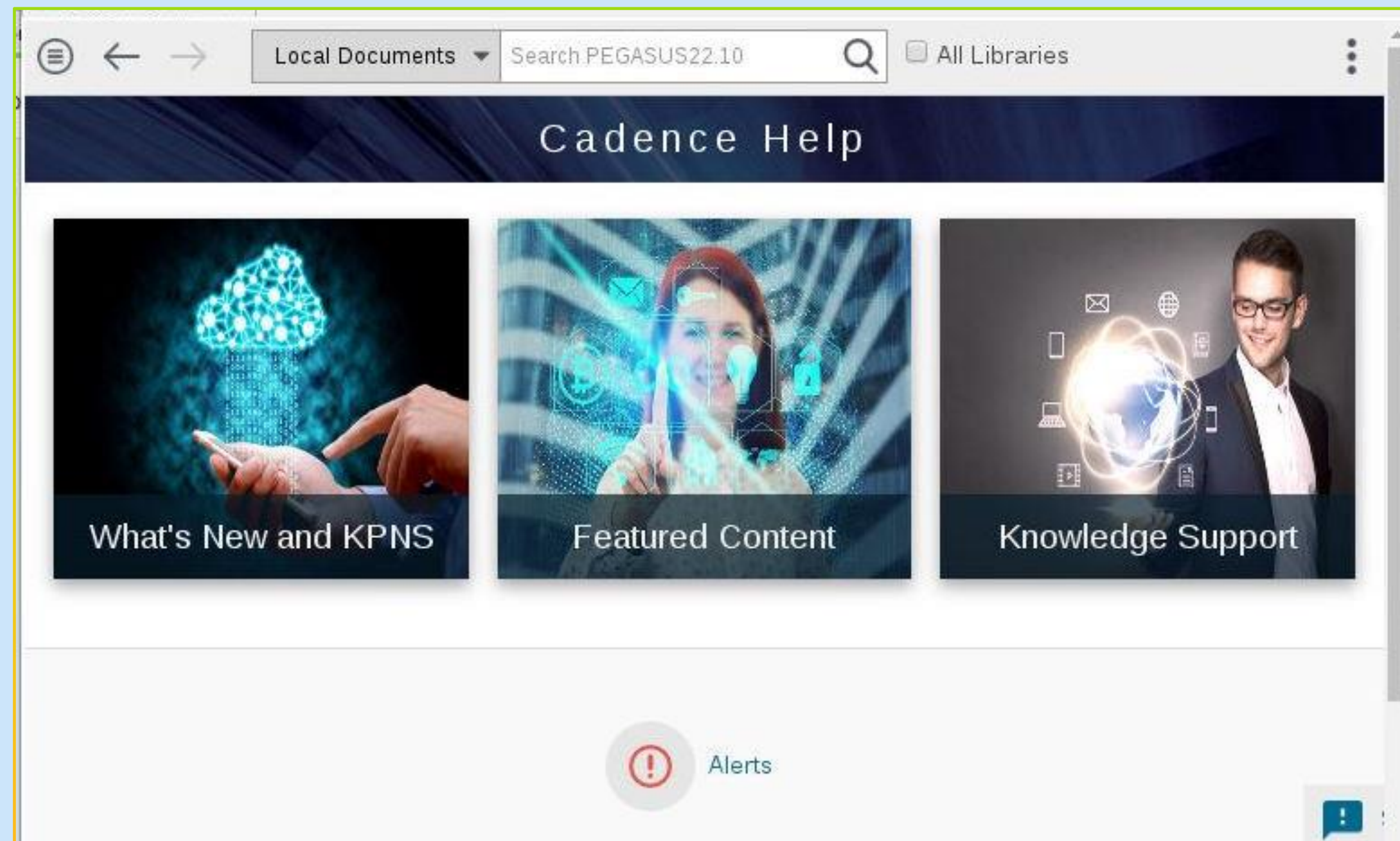
Cadence Proprietary Cloud-based 'Context-Sensitive' Content Viewer

Key Features



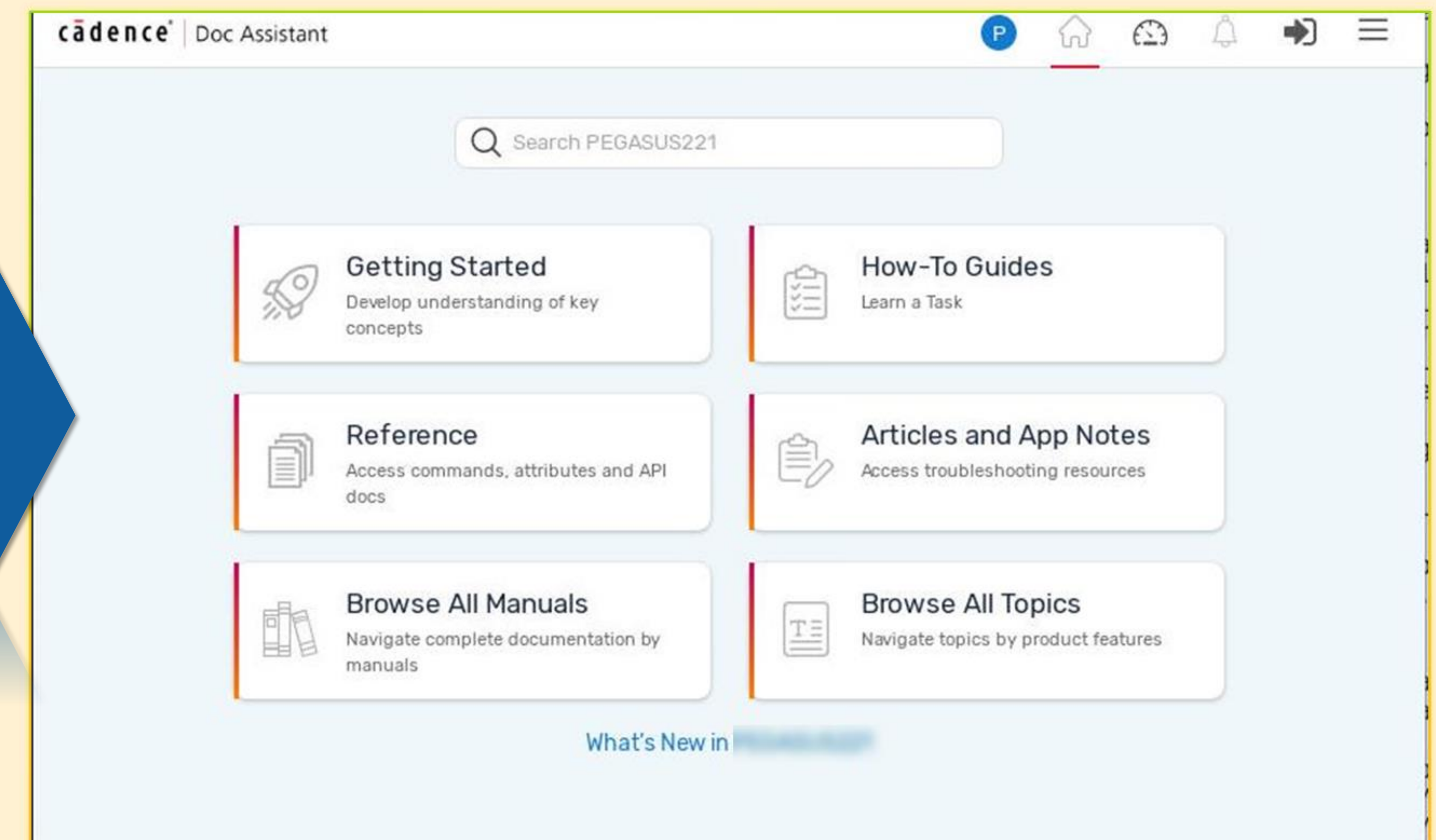
- ✓ Easy-to-Browse Wide Range of Content
- ✓ Intelligent Topic-Based Search
- ✓ Quick Access to Related Search Result Information
- ✓ Evolving User Experience Personalization
- ✓ Online and Offline Modes
- ✓ Content Updates Independent of Release Vehicles

Cadence Help vs. Doc Assistant



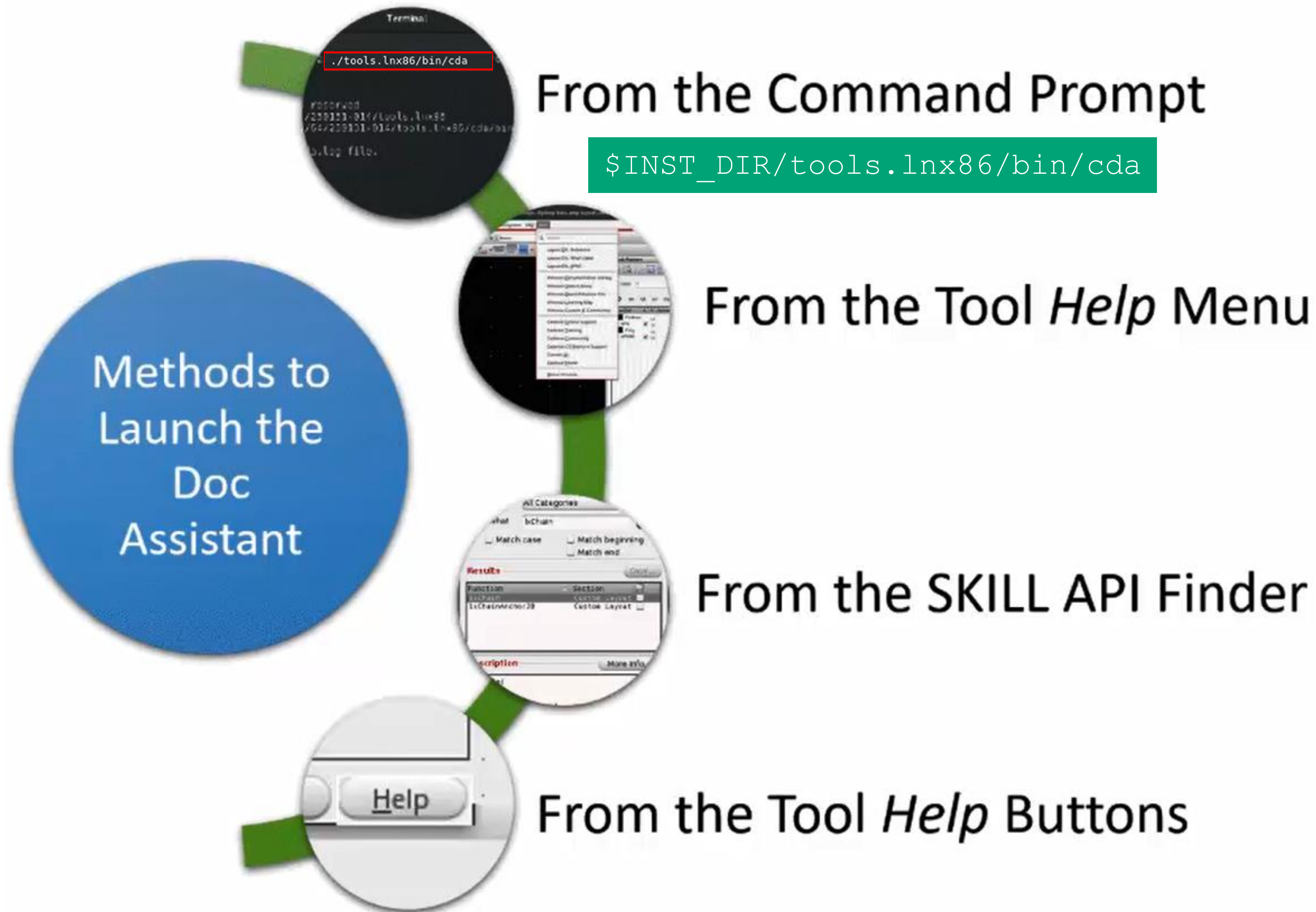
3rd Generation of Help Support introduced from the year 2023

- The primary documentation source is the installation directory.
 - Requires index and documents to be shipped with the software.
- The search scope limit impacts the search speed and relevance.
- Displays content in a book-like structure (Large HTML chapters to scroll through).



- Sources documentation from the cloud, with the option of accessing a minimal documentation set from the installation directory.
- Faster and improved accuracy of search on documents and support articles (using product taxonomy).
- Easy-to-browse topics with navigation filters.

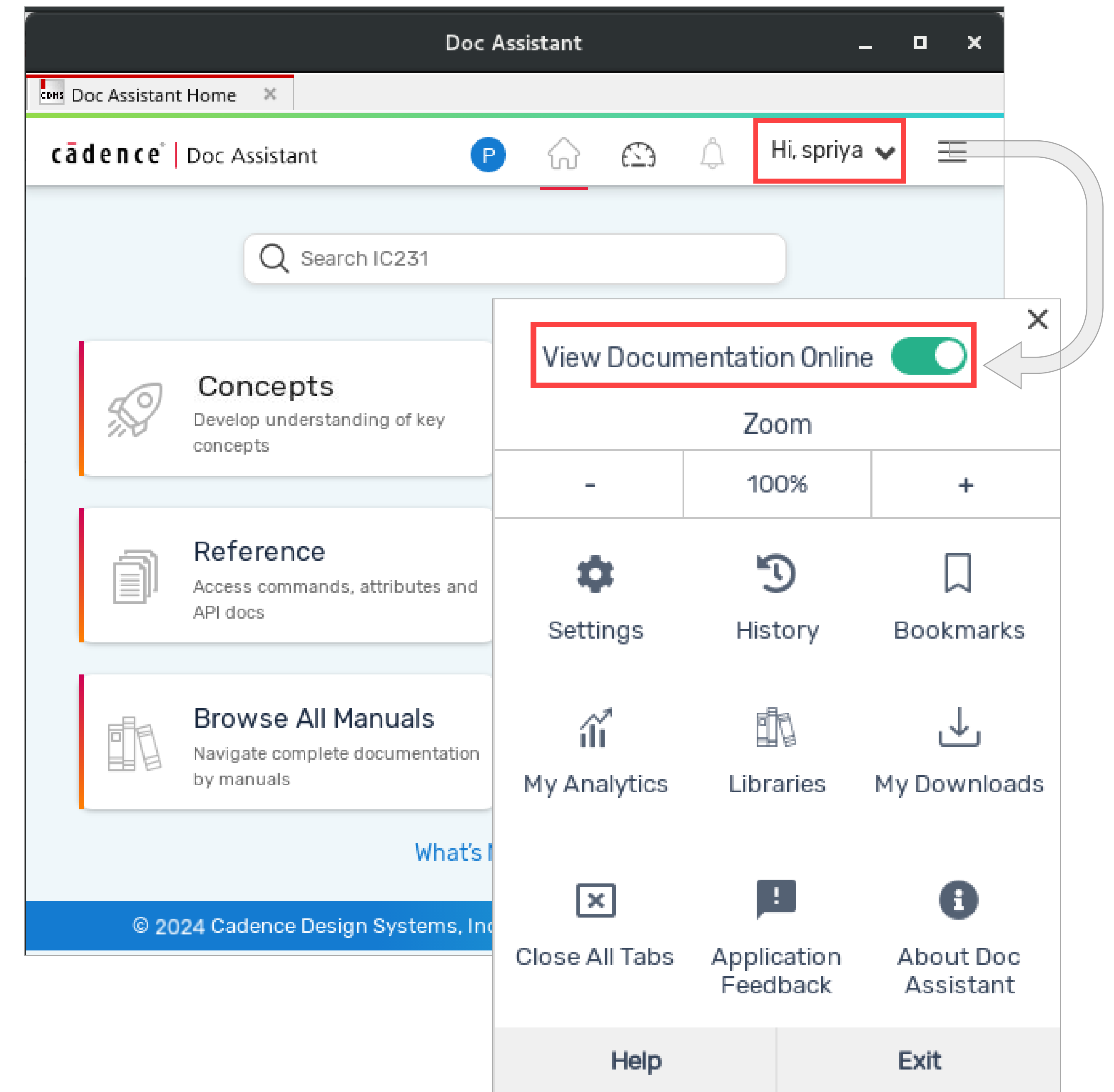
Launching Doc Assistant



Online and Offline Access Modes

Hybrid mode ensures documentation availability, irrespective of Internet connection

- Online Mode – Doc Access from the Cloud
 - Doc Assistant connects to the online repository.
 - Up-to-date documents are always accessible.
 - OTP-based login for personalized experience.
- Offline Mode – Doc Access from Installation
 - Doc Assistant automatically switches to offline mode to display documentation from the installation directory if no Internet connection is available.

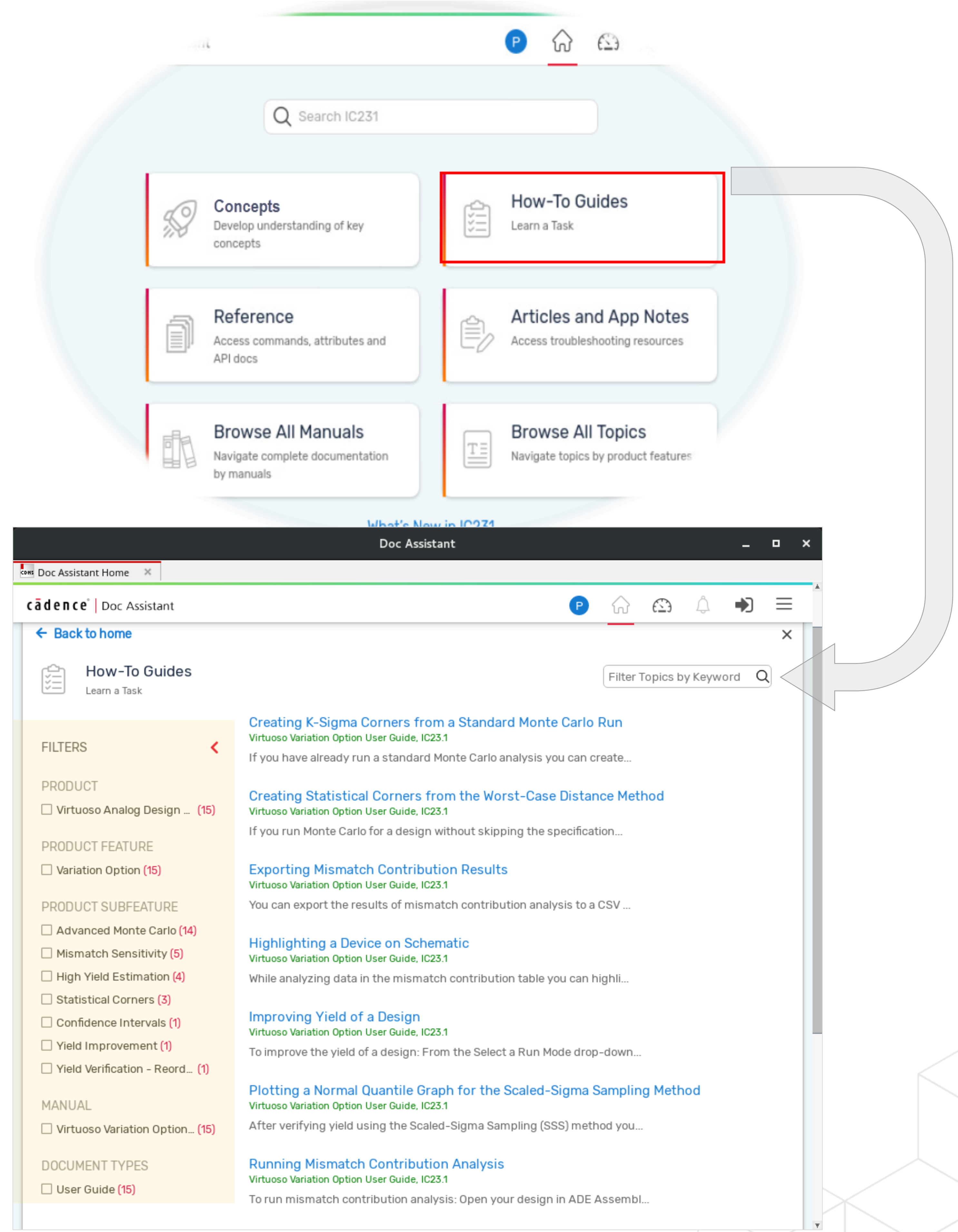


Browsing Content

Context-driven document navigation with filters

- Documents are organized according to their content types:
 - Concepts
 - How-To Guides
 - Reference
 - Articles and App Notes (from Cadence Learning and Support Portal)

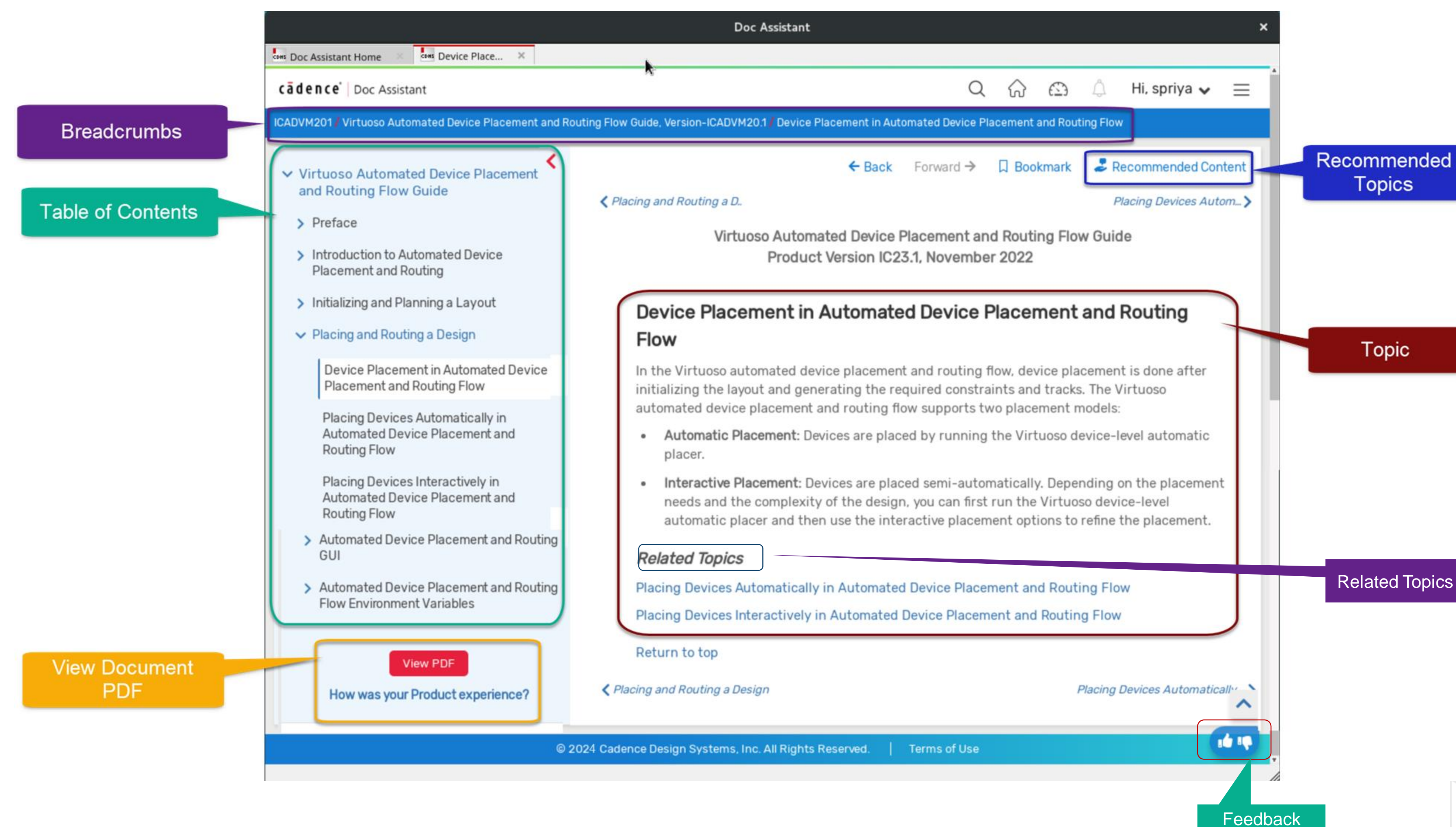
- Topics can be filtered based on products, product features, and sub-features



Viewing Content

Self-contained topics

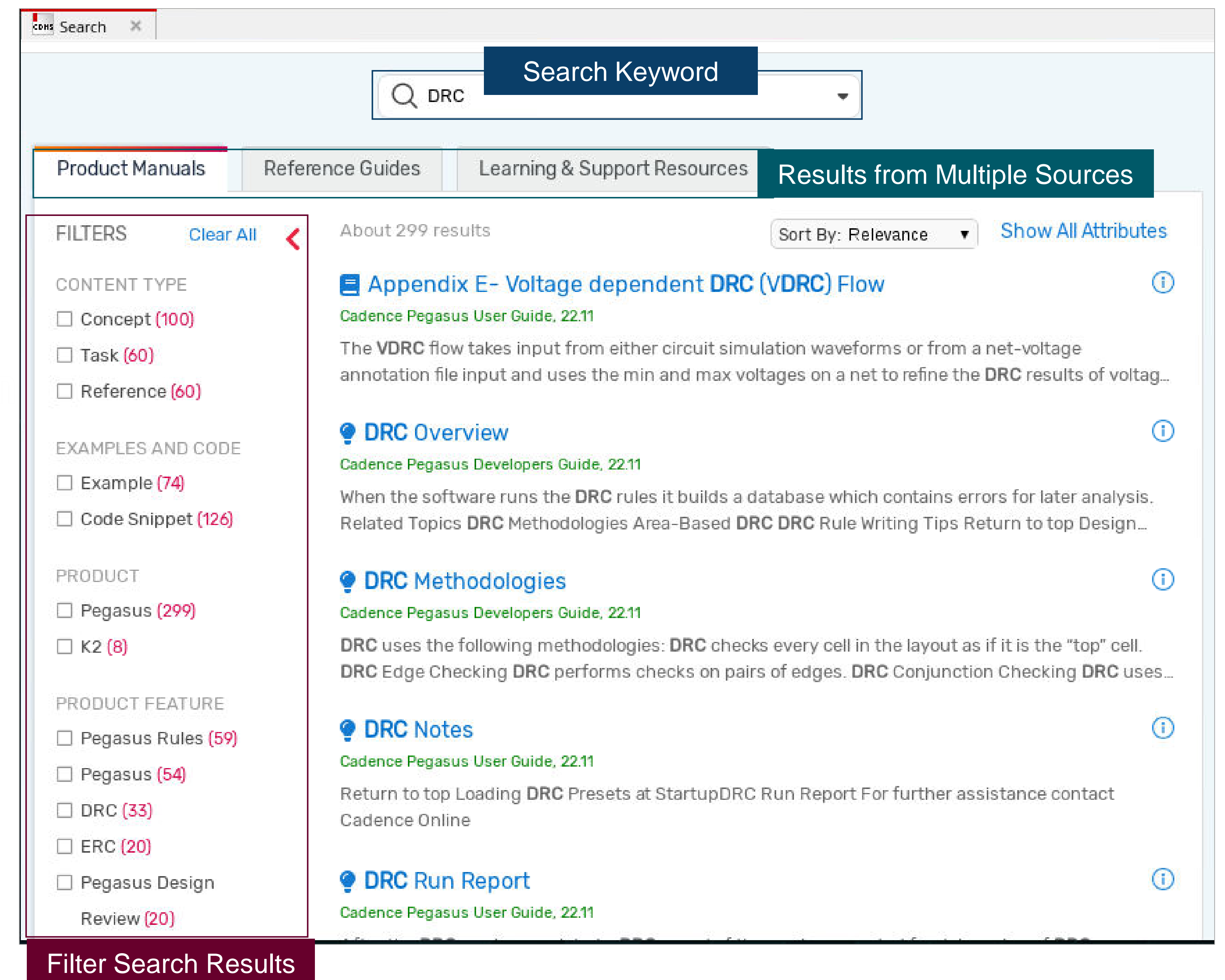
- Concise but complete, modular topics that map to the product and product features
- Use the Search feature to find content of interest
- Navigate through the TOC specific to the current topic
- View content recommendations related to the current topic
- View videos and PDFs without any third-party dependencies



Searching for Content

Unified search results from multiple content sources

- Search for all product documentation and support resources in one go
- Global search across all pages
- Search suggestions for keywords and pages
- Improved search results using product, feature, and content type filters

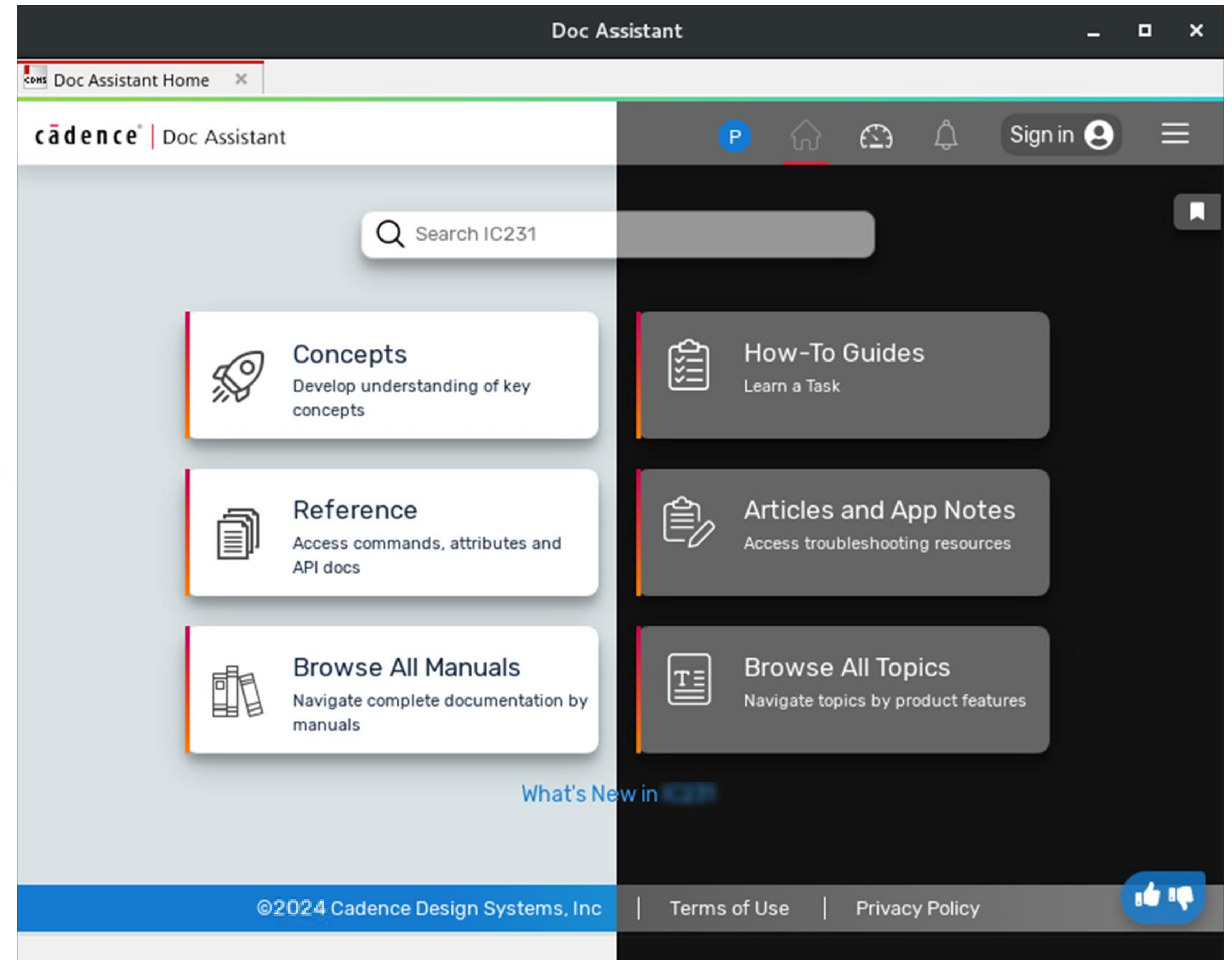


Supported Themes

Reduced strain on eyes and power consumption.

Doc Assistant supports the following themes:

- **Light:** This is the default theme, where the background is light, and text is in a darker color.
- **Dark:** Switching to the Dark theme reduces strain on your eyes and also the power consumption to some extent. In this mode, the background is dark, and text is in a contrasting lighter color.



Personalizing Settings

Define preferences and scope of content access

- Add document libraries from multiple Cadence releases
 - Flexibility to refine scope of products
- Default products are automatically enabled
 - Flexibility to refine scope of products
- A **Dashboard** for personalized content, which includes:
 - Bookmarks
 - History
 - My Analytics
 - Download and synchronize the installation with product documentation (for administrators)

Multiple Releases

Add, remove, and change document releases

Release	Selected Release	Remove
XCELIUMAGILE22.11	Make Current	
FIDELITY2022.2	Make Current	
IC23.10	Current Release	Default Doc
SIGRITY20231	Make Current	

Product List

Select Products

Filter Products

- Select / Deselect All
- Virtuoso Schematic Editor
- Virtuoso Layout Suite
- CadenceHelp
- Virtuoso Analog Design

Save

Dashboard Options

ACTIVITY

- History
- Bookmarks

ANALYTICS

- Focus Area
- Content Type

PREFERENCES

- Libraries
- My Products
- Settings
- My Downloads

Save shortcuts to your favorite topics

Filter Bookmarks

- IC231
 - Terms Used in Concurrent Layout Editing - Virtuoso Concurrent Layout Us...
 - Accessing Concurrent Layout - Virtuoso Concurrent Layout User Guide, VL...
 - Concurrent Layout Modes - Virtuoso Concurrent Layout User Guide, Virtuo...



cādence®

© 2024 Cadence Design Systems, Inc. All rights reserved worldwide. Cadence, the Cadence logo, and the other Cadence marks found at <https://www.cadence.com/go/trademarks> are trademarks or registered trademarks of Cadence Design Systems, Inc. Accellera and SystemC are trademarks of Accellera Systems Initiative Inc. All Arm products are registered trademarks or trademarks of Arm Limited (or its subsidiaries) in the US and/or elsewhere. All MIPI specifications are registered trademarks or service marks owned by MIPI Alliance. All PCI-SIG specifications are registered trademarks or trademarks of PCI-SIG. All other trademarks are the property of their respective owners.

